

## Review

Identify similar rectangles with these dimensions:

a) 10 cm by 15 cm

b) 19 cm by 28 cm

c) 14 cm by 21 cm

d) 16 cm by 24 cm

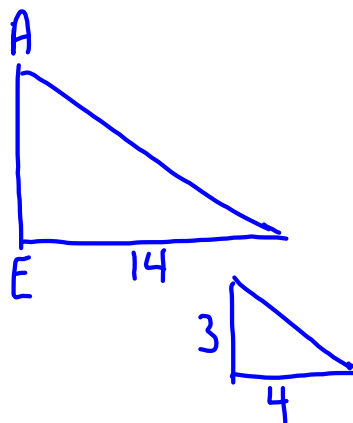
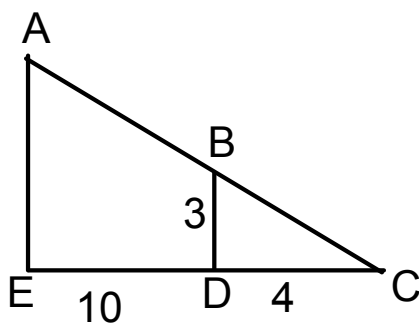
$$\frac{28}{15} = 1.8\bar{6} \quad \frac{19}{10} = 1.9$$

$$\frac{21}{15} = 1.4 \quad \frac{14}{10} = 1.4$$

$$\frac{24}{15} = 1.6 \quad \frac{16}{10} = 1.6$$

✓ a, c, d

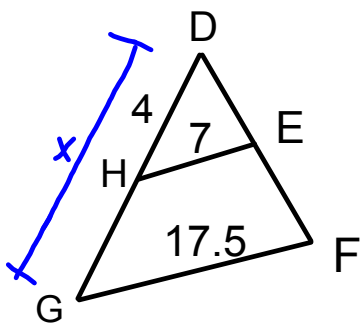
2. Determine the length of AE in this pair of similar triangles.



$$\frac{AE}{3} = \frac{14}{4}$$

$$AE = \frac{14(3)}{4} = 10.5$$

3. Determine the length of HG.



$$\frac{x}{4} = \frac{17.5}{7}$$

$$x = \frac{4(17.5)}{7}$$

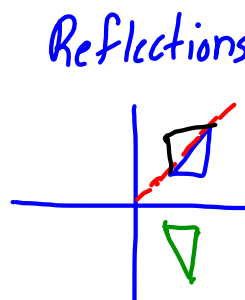
$$= 10$$

$$HG = 10 - 4$$

$$= 6$$

Types of transformations

- ✓ reflections
- rotations
- translations



Rotations  
Tissue Paper  
90° 180° 270°  
CW CCW

Translations

Sliding objects  
RU4

$$(1, 4) \rightarrow (2, 8)$$

## Chapter Review

Page 366 9, 11,13, 14,15

Page 373 3- 8 10-12

Page 378-379 2, 3a, 7-10, 13a, 14, 15a,  
17, 18

When finished...

Practice Test page 380